

Cibēs

2026 NEWEST MODEL
CIBES AIR 2

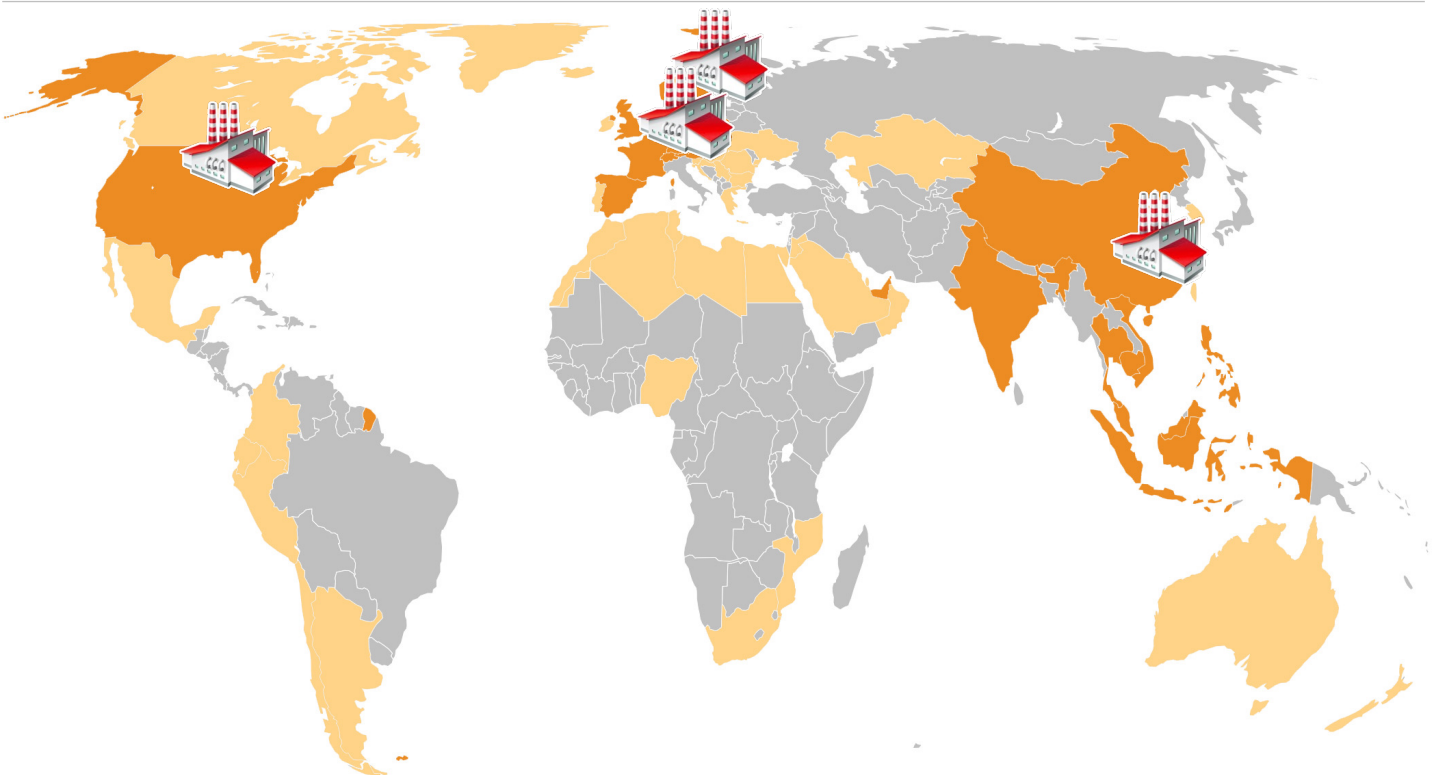
CIBES – SINCE 1947

Cibes Lift Group is one of the world's largest manufacturers of low-speed lifts, with sales and distribution in more than 70 countries, and a network of 200+ certified distributors.



WHAT MAKES CIBES SPECIAL?

DIRECT SALES ACROSS THE WORLD



FACTORY DIRECT SUBSIDIARIES IN:

SWEDEN | NORWAY | FINLAND | FRANCE | UNITED KINGDOM |
GERMANY | HOLLAND | SPAIN | AUSTRIA | BELGIUM | DUBAI |
CHINA | VIETNAM | THAILAND | **PHILIPPINES** | INDONESIA |
CAMBODIA | | INDIA | USA | MALAYSIA | SWITZERLAND

CIBES DIRECT OWNED FACTORIES

Gävle, SE | Jiaxing, CN |
Peoria, USA | Gdansk, PL

APPROVED DEALERS IN:

70+ Countries

WORDS FROM OUR CEO,
PER LIDSTRÖM



One does not build a company that lasts over 78 years without an unwavering commitment to customer satisfaction. Cibes fully embraces the Scandinavian ethos of reliability, which is why we are uncompromising when it comes to the quality of our products, the elegance of our designs and our commitment to safety. From the start, our best marketing has always been our existing customers, and the 50,000 lifts we have installed around the world continue to be a driver of our success. At Cibes, we know that our happy customers are the key to our longevity, and we look forward to having you join the Cibes family!

Per Lidström

CEO, CIBES LIFT GROUP

ABOUT

CIBES LIFT GROUP IN 2024

320

MILLION EUROS

In turnover in 2023

1,800

EMPLOYEES

Across the world

100,000+

LIFTS INSTALLED

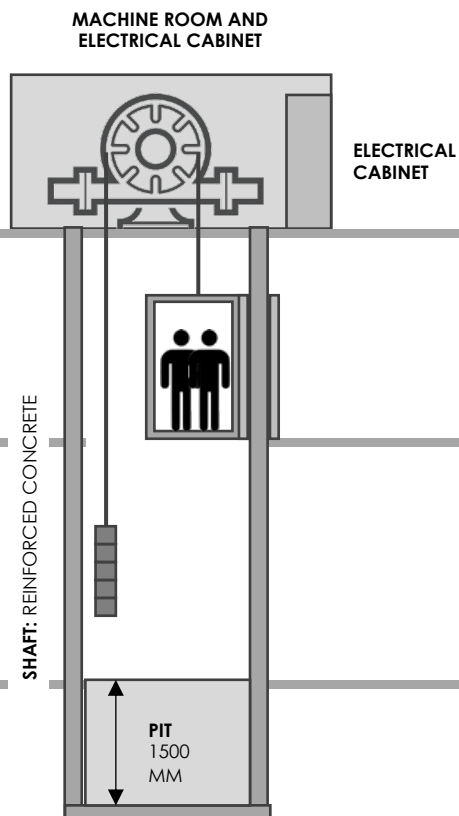
In 70+ countries

ACCESSIBILITY FOR EVERYONE, EVERYWHERE

CUTTING-EDGE

SCREW-DRIVEN TECHNOLOGY

TYPICAL TRACTION



CIBES SCREW-DRIVE

NO HEADROOM NEEDED

PIT
0 - 50 MM

HOW A SCREW DRIVE MECHANISM WORKS

DID YOU KNOW?



Our screw is so strong that if you place the weight of 9 pick-up trucks on the weakest point (the joint), it still won't break!



The lift is attached to a nut on an endless screw



If the nut rotates one way, the lift goes down



If the nut rotates the other way, the lift goes up!

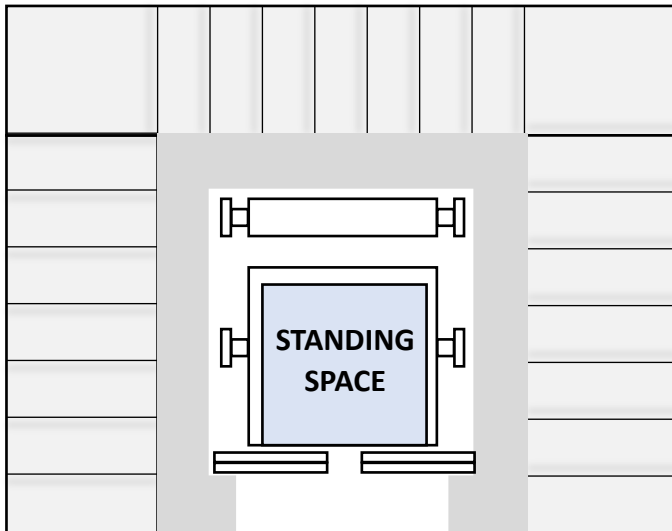
EXCEPTIONAL ADVANTAGES

SUPER SPACE SAVING

MORE STANDING SPACE - HIGHER UTILIZATION

TRADITIONAL CABIN LIFT

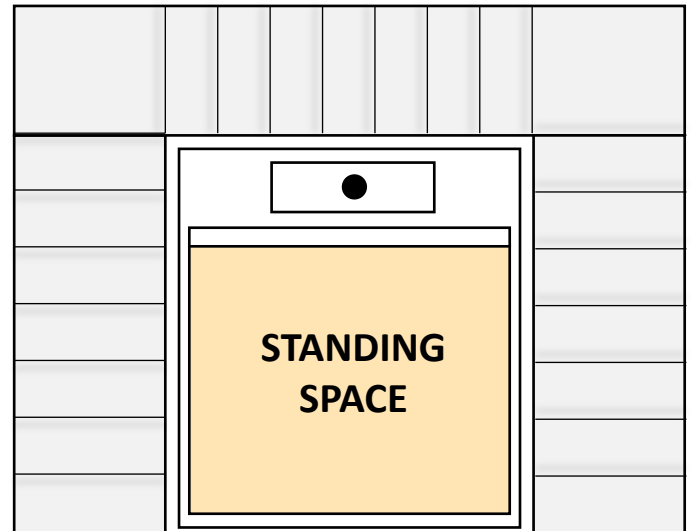
Middle of the stairs



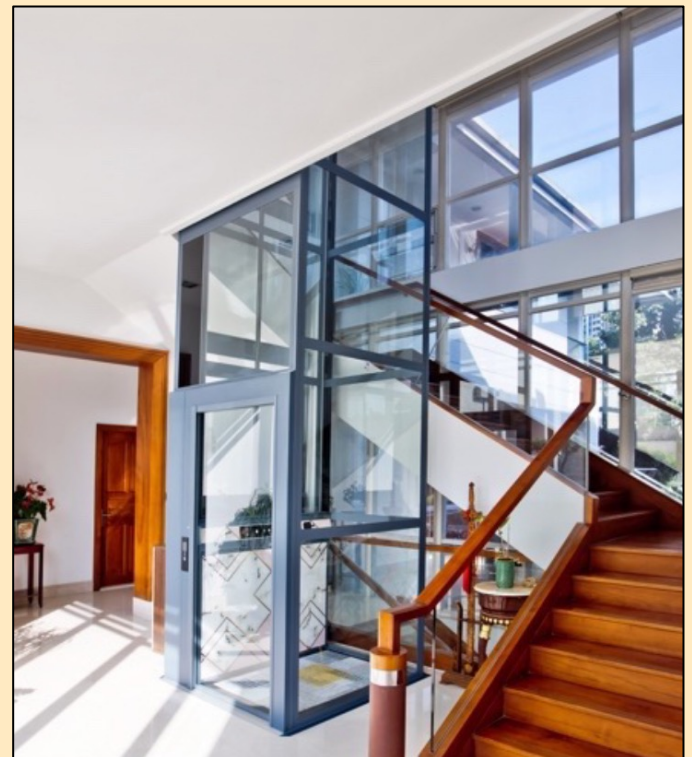
SPACE INSIDE OF LIFT:
0.6 sqm

CIBES PLATFORM LIFT

Middle of the stairs



SPACE INSIDE OF LIFT:
1.5 sqm



WHAT DOES SAFETY MEAN?

Rating an elevator's safety has two components: which **standard** do you follow, and which **certification agency** did you use to confirm that you followed that standard.

OUR STANDARDS

EN 81-41

This is the **European Standard** that the Cibes Air is certified to. It is a 167 page document composed of 108 Essential Safety Requirements and agreed upon by 28 European countries.

ISO 9001:2015

ISO 9001 is an **internationally recognized standard** for creating, implementing, and maintaining a Quality Management System (QMS), which means all lifts leaving our factory have similar production quality

ISO 14001:2015

ISO 14001 is an **international standard** that provides a framework for organizations to design and implement an effective environmental management system (EMS) which means we control the environmental impact each lift has.

SIL3

SIL3 (Safety Integrity Level 3) is a high safety classification defined by the **IEC 61508 standard**, indicating that a system or component has a very low probability of failure and is suitable for use in high-risk applications requiring a high degree of reliability and risk reduction.

WHO WE CERTIFY WITH



Founded in 1933, Liftinstituut is one of Europe's leading **certification organizations** for lifts, with a long track record certifying projects for major companies like Kone, Schindler, Mitsubishi and Otis.



Leading German-based **certification organization** of technical testing, inspection, and certification services, founded in 1872 and headquartered in Cologne, Germany



Leading German-based **certification organization** of technical testing, inspection, and certification services, founded in 1872 and headquartered in Cologne, Germany



A JV set up in 1998 between SGS Group (a global leader in inspection, verification, testing, and **certification**) and TÜV Saarland, German agency created in 1871. providing independent testing, certification, and inspection services

HISTORY OF SCREW - DRIVE SCREW-DRIVE GENERATIONS

- **PMSM**– Permanent magnet synchronous motor for a ridiculously silent and smooth ride
- **New Gen Display Screen** – Our newest UI yet, smooth and seamless
- **Voice Control** – as an option on all Gen 5 lifts to improve convenience and accessibility



2025



- **Even Safer Lift!** – light curtain upgrade for safety edges for near-instantaneous stops, 2N dialer to ensure always functional phone
- **Even Smoother Ride** – Upgraded XXL rollers for an ultra smooth guiderail connection
- **Connected Lift** – connected to our Cibes Control Center for monitoring and remote assistance if needed

2022

- **Reduced oil use:** no oil on guiderails, auto-lubricating system on screw, >200 mL of oil / year!
- **More energy savings:** 1.5 kW motor
- **Silent operation:** new screw pitch and silent box for sound as low as 40 dB
- **Reduced maintenance:** as low as once per year



2019



- **Smart Operating System:** digital OS (i.e. software)
- **Safer Lift** – thanks to our CiCon System, our lift can be SIL-3 certified
- **Reset RFID Tag** – you can reset the lift yourself – no need to wait for one of our technicians
- **Warning Systems:** e.g. low battery system
- **Fault and Breakage Record:** keeps track of all key metrics e.g. travel distance, number of faults and reason to help improve repairs

2017

- **Mechanical System:** all functions were mechanical and not driven by software
- **Lower Travel Height:** 13 m

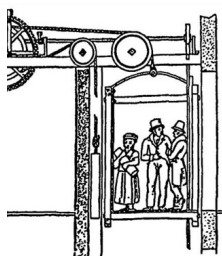
1st generation lifts were **discontinued** in 2017 for all Cibes Lift Group products

1990s



1793

1st SCREW-DRIVE
ELEVATOR



Invented for the Russian empress Catherine the Great by inventor Ivan Kulibin, the 1st screw drive elevator was installed in the imperial palace The Hermitage in St. Petersburg

WHY CUSTOMERS CHOOSE CIBES

MEET OUR AFTER-SALES TEAM



All our customers agree – the main reason to choose a Cibes lift is not our cutting-edge products or our expert sales team – **it is the quality of our After Sales Service.**

As soon as you book your lift with us, you will be entrusted to our Customer Care team with your appointed representative. They will ensure that:

BEFORE INSTALLATION

- Liaising with your construction team to prepare site & delivery
- Checking that site is correctly prepared and ready for installation

AFTER INSTALLATION

- Checking that installation is in line with our strict quality standards
- Delivering handover and product training on how to use your lift

... AND FOR THE DECADES TO COME

- Tracking and arranging timely maintenances
- Coordinating repairs, spare parts & fixes (if needed)
- Handling any customer requests / upgrades and more!

Mylen – Head of Customer Care

How do we know that our customers love our Customer Care Team?

Referrals are 35% of our new business!



OUR TRUST IN QUALITY

CIBES 2 + 2 + 10 PROGRAM

So confident are we in the quality of our products that we offer a comprehensive 2+2+10 product guarantee.

2 YEARS OF FREE WARRANTY

The only thing more stressful than buying a lift is probably worrying about repairs and problems.

With Cibes, that worry does not exist.

We know that the quality of our materials, craftsmanship and installation creates a one-of-a-kind lift that will last for decades.

In fact, we are even willing to guarantee it, with a FREE 2 year warranty for every single V70 Cibes Lift that we sell.

Welcome to a new level of worry-free living. Welcome to the Cibes family!

2 YEARS OF FREE MAINTENANCE

Even more important than the warranty is the hidden cost of maintenance. With Cibes, there are no hidden costs: we offer 2 years of maintenance for FREE to every single V70 Cibes Lift.

No last-minute additions for labor or spare parts – at Cibes, we want to provide our customers with complete peace of mind.

Most importantly, a Cibes maintenance is no small thing: we only use genuine Cibes Technology™ products, included Cibes Genuine High Performance Oil and Cibes Universal Contact Spray, to ensure that your lift continues to operate smoothly for decades!

10 YEARS OF FREE WARRANTY



on the Cibes Lift
Screw & Nut,
conditional to doing
maintenances with Cibes Team
timely throughout this period



INTRODUCING OUR NEWEST MODEL

CIBES AIR 2



REVOLUTIONARY HANDRAIL CONTROL

NEXT GEN DISPLAY

BUILT-IN FAN

HANDRAIL CONTROL

ERGONOMIC DESIGN





WOOD

Nothing quite captures the essence of Swedish minimalist design like our wood veneer designs. Now upgraded to three different oak types to match any interior.

TEXTILE

Bring warmth and texture into your space with our new textile panels. Inspired by Scandinavian interiors, these woven surfaces add a soft, tactile contrast to the lift's clean lines.

POWDERCOAT

Our powder-coated finishes define durability and refinement. Choose from a range of matte and metallic tones that highlight the lift's architectural form while offering exceptional resistance to wear. Every shade is carefully curated to harmonize with your interiors.

BACK PANEL FINISHES



LIGHT OAK



WARM OAK



DARK OAK



BEIGE TEXTILE



BLACK TEXTILE



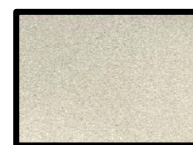
POWDERCOAT
(Gothic Graphite Black)



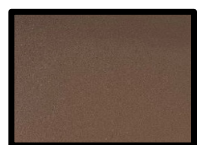
Organic
Signal White



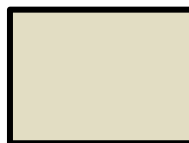
Oriental Grey
Beige



Oriental
Oyster White



Oriental Pale
Brown



Quartz 1



Quartz 2



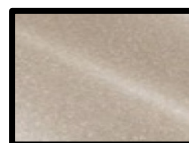
January 4



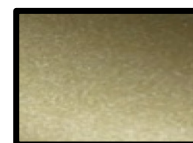
February 5



February 6



Roman
Bronze



Roman Gold



Glacial Slate
Grey



SLEEK AND ELEGANT GENERATION 2 GLASS SHAFT

1000 MM FRAMELESS GLASS

Cibes Air 2 comes with a 1000 mm frameless glass shaft as standard (which can be swapped out with powdercoated steel when needed) to maximize glass and minimize frames

LOAD BEARING PROFILE

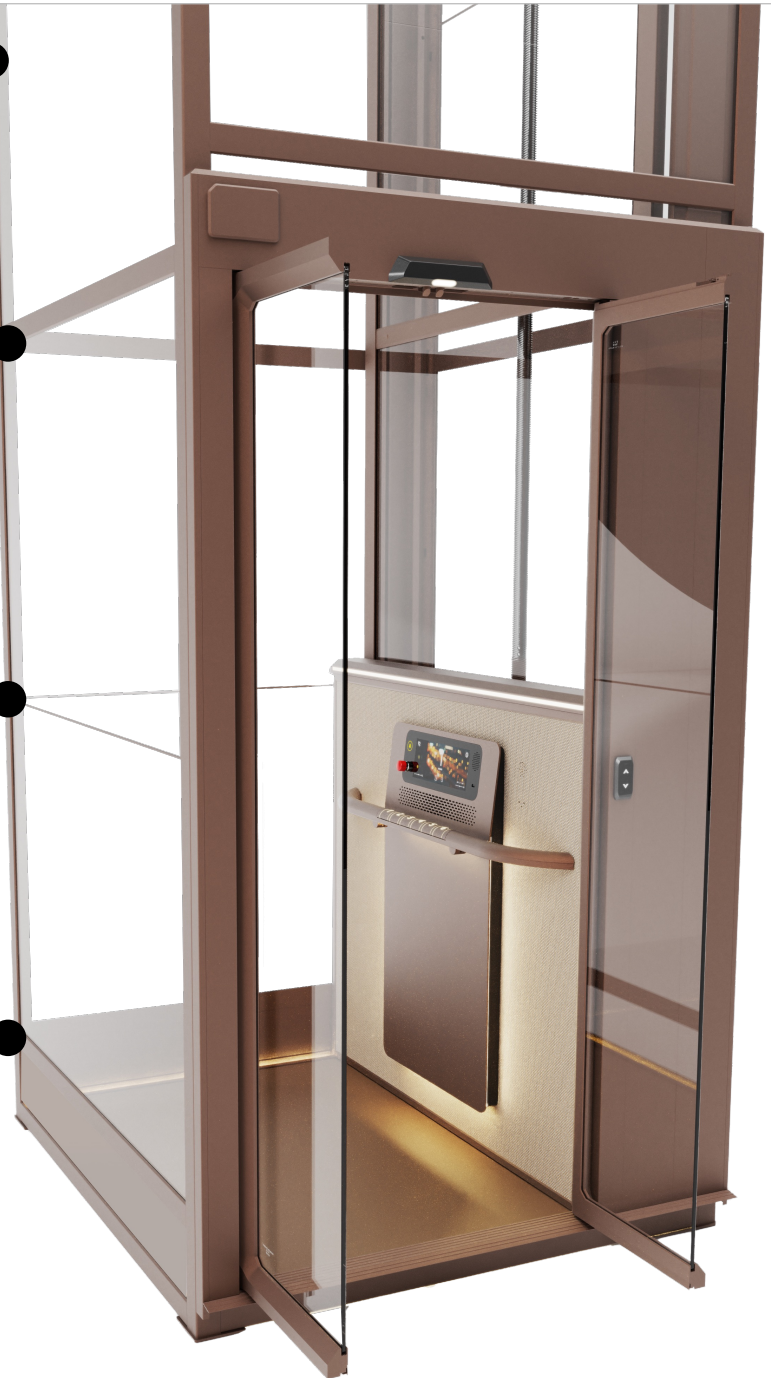
Every two meters, the shaft has a load-bearing profile that holds the weight of the two panels above it. This ensures structural stability for the lift and makes it easy to swap out a glass panel if needed!

INVISIBLE PROFILE

Every two meters, an tiny profile separates the two pieces of glass. It is so discreet that it almost appears as if you have two meter tall glass sections!

KICK PLATE

You can either start the glass right from the floor, or build a 300 mm kickplate to protect the base of the lift from brooms, mops, inadvertent kicks and other hazards.



CHOOSE BETWEEN SWING AND SALOON DOOR

Our automatic saloon doors steal the show, while our semi-automatic swing doors are reliability incarnate. Choose which solution fits your needs and aesthetic preferences - you can even do a different door on every floor!



A modern glass elevator with warm lighting is the central focus. The elevator has a wooden interior and a control panel. It is surrounded by glass walls and has recessed lighting on the ceiling and sides. The background shows a living room with a man and a child. The man is sitting in a yellow armchair, looking at a tablet. The child is sitting on the floor, playing with colorful blocks. There is a potted plant and a fireplace in the background.

PALACE OF LIGHTS

RECESSED CEILING LIGHTS

The ceiling is designed with recessed lighting, providing both illumination and a luxury feel

HIDDEN GUIDERAIL LIGHTS

Running up either side of the guiderails, lights guide the way from the bottom of the lift to the very top

SAFETY EDGE LIGHTS

Wrapping around the platform, the safety edge lights bring a podium-vibe to every ride

CONTROL THE WARMTH

From the control panel, control the warmth of your lights, from 2700 K (warm orange) to 6500 (dazzling white)

ULTRA COOLING FAN



PREMIUM ANIMATED CALL BUTTON



HOW DOES THE PREMIUM ANIMATION WORK?



When a user presses
the Call Button...



The arrows move out
of the screen...

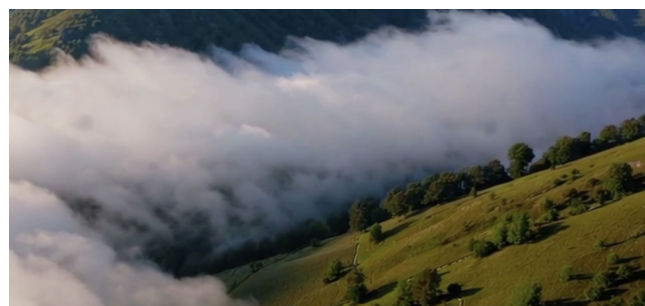
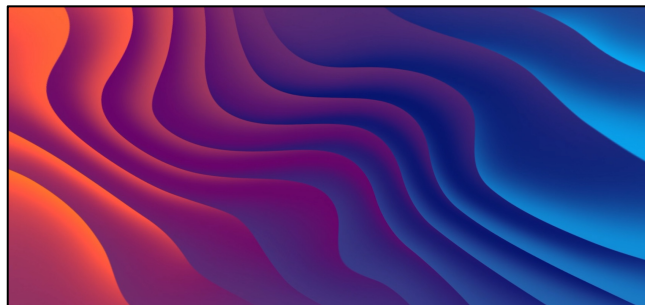
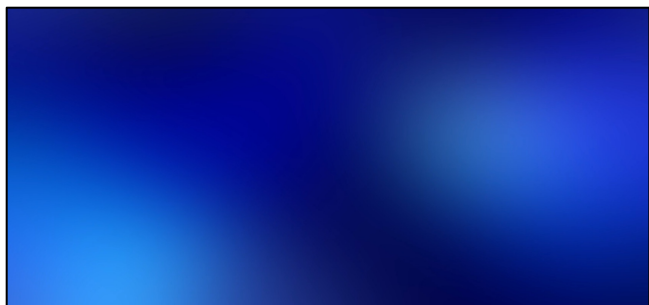
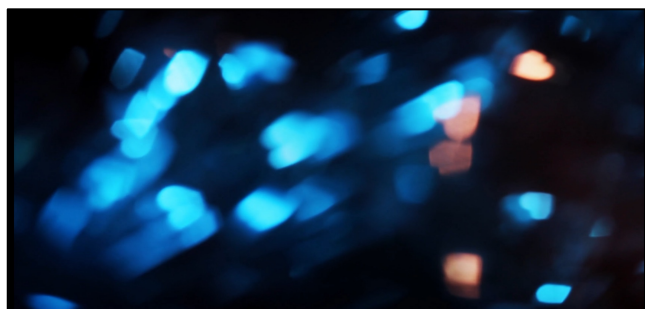


Revealing the floor
the lift is currently on!



SMART DISPLAY

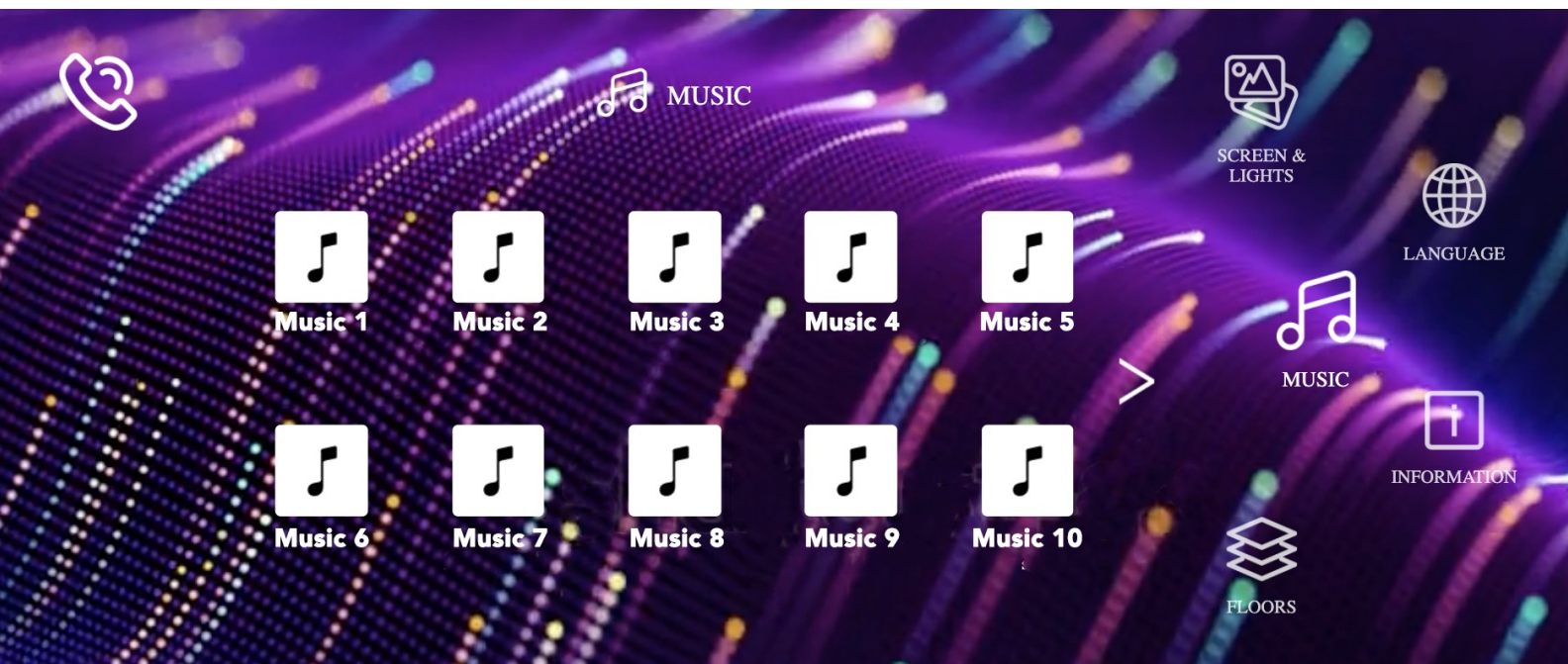
17 ANIMATED DESIGNS





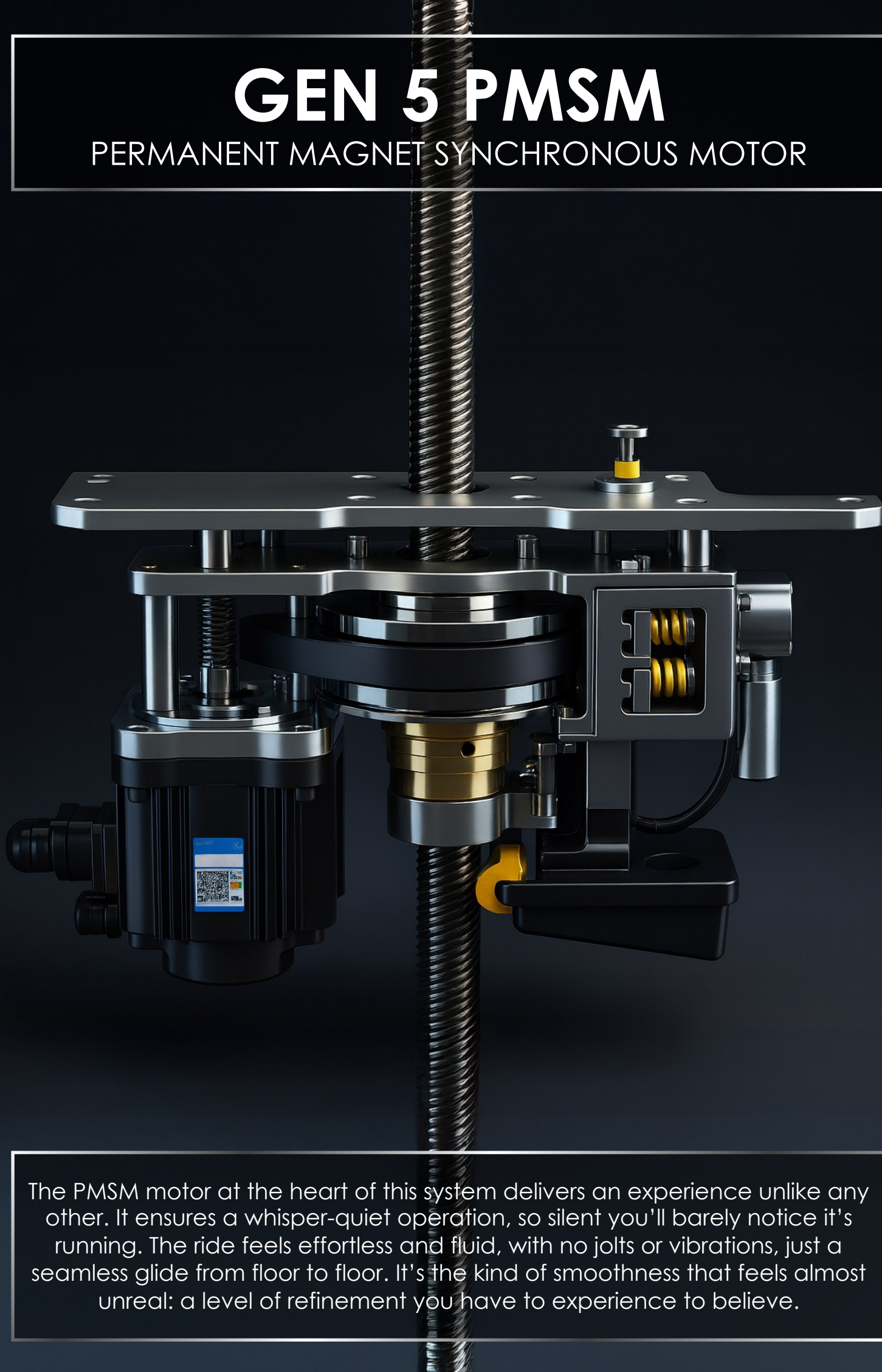
FULL MUSIC SELECTION

ELEVATE THE VIBE WITH MUSIC



GEN 5 PMSM

PERMANENT MAGNET SYNCHRONOUS MOTOR



The PMSM motor at the heart of this system delivers an experience unlike any other. It ensures a whisper-quiet operation, so silent you'll barely notice it's running. The ride feels effortless and fluid, with no jolts or vibrations, just a seamless glide from floor to floor. It's the kind of smoothness that feels almost unreal: a level of refinement you have to experience to believe.








REMOTE MONITORING BY IOT

CIBES HomeSense



Cibes HomeSense is our intelligent remote monitoring system that keeps your home lift connected and protected. Designed for homeowners who value peace of mind, HomeSense lets us know your lift's condition anytime, anywhere, ensuring optimal performance and early detection of potential issues.

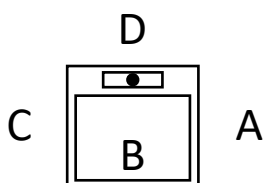
-  **Enabling Preventative Maintenance:** Detects early signs of issues (e.g. low emergency battery, abnormal usage patterns) before they become problems.
-  **Monitoring Only:** For safety reasons, Cibes HomeSense allows status checks but not remote operation.
-  **Real-Time Insights:** View your lift's health, uptime, and alerts at a glance through a secure cloud dashboard.
-  **Remote Log Access:** Service teams can securely download diagnostic logs to assist you without a site visit.
-  **Faster Support:** Enables technicians to arrive prepared, reducing downtime and unnecessary trips.

With **Cibes HomeSense**, you have the confidence that your lift is always running safely and efficiently, with Cibes quietly protecting your home in the background.

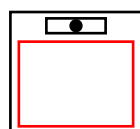
	PLATFORM SIZE (in mm)		SHAFT SIZE (in mm)		Cut-Out Size (add +30 mm on adjacent side to door)	
	A/C Side	B/D Side	A/C Side	B/D Side	A/C Side	B/D Side
1	635	850	1000	900	1040	940
2	735	850	1100	900	1140	940
3	835	850	1200	900	1240	940
4	935	850	1300	900	1340	940
5*	1035	850	1400	900	1440	940
6	1135	850	1500	900	1540	940
7	635	950	1000	1000	1040	1040
8	735	950	1100	1000	1140	1040
9	835	950	1200	1000	1240	1040
10	935	950	1300	1000	1340	1040
11	1035	950	1400	1000	1440	1040
12*	1135	950	1500	1000	1540	1040
13	635	1050	1000	1100	1040	1140
14	735	1050	1100	1100	1140	1140
15	835	1050	1200	1100	1240	1140
16	935	1050	1300	1100	1340	1140
17	1035	1050	1400	1100	1440	1140
18	1135	1050	1500	1100	1540	1140
19	635	1150	1000	1200	1040	1240
20	735	1150	1100	1200	1140	1240
21	835	1150	1200	1200	1240	1240
22	935	1150	1300	1200	1340	1240
23	1035	1150	1400	1200	1440	1240
24	1135	1150	1500	1200	1540	1240
25	635	1250	1000	1300	1040	1340
26	735	1250	1100	1300	1140	1340
27	835	1250	1200	1300	1240	1340
28	935	1250	1300	1300	1340	1340
29*	1035	1250	1400	1300	1440	1340
30*	1135	1250	1500	1300	1540	1340
31	635	1350	1000	1400	1040	1440
32	735	1350	1100	1400	1140	1440
33	835	1350	1200	1400	1240	1440
34	935	1350	1300	1400	1340	1440
35	1035	1350	1400	1400	1440	1440
36*	1135	1350	1500	1400	1540	1440
37	635	1450	1000	1500	1040	1540
38	735	1450	1100	1500	1140	1540
39	835	1450	1200	1500	1240	1540
40	935	1450	1300	1500	1340	1540
41*	1035	1450	1400	1500	1440	1540

*Available from Dec '25

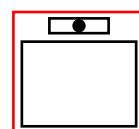
HOW TO UNDERSTAND THE NUMBERS



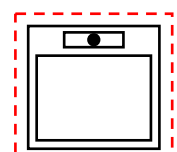
B & D are parallel to the screw and motor



CABIN SIZE is the standing space inside the lift



SHAFT SIZE is the final size of the installed shaft



CUT OUT SIZE is the space needed to install the lift

TECHNICAL SPECIFICATIONS

TECHNICAL DETAILS

	CIBES AIR 2
MAX # OF STOPS	6 stops
MAX TRAVEL HEIGHT	20,000 mm
POWER SUPPLY	1 x 230V / 3 x 230V / 3 x 400 V
MINIMUM HEIGHT TOP FLOOR	2350 mm
BOTTOM PIT	50 - 70 mm / 0 mm optional with ramp
PRODUCT STANDARD	EN81-41
DRIVE MODE	PMSM Ultra Silent
RATED POWER	3 kW
MACHINE ROOM	None
DOOR OPENING	Flexible choice for 3 sides
SAFETY DEVICE	360° catchment protection with mechanical safety edge. Emergency Battery Lowering in case of power failure. Overload alarm device. Phone-equipped emergency communication device. Electronic and mechanical safety door protection system. Can be connected to fire alarm device.
SHAFT OPTION	Panoramic
DOORS	Swing / Saloon Doors
LOCATION	Indoor or Outdoor
SPEED	0.15 m/s
GLASS	Frameless



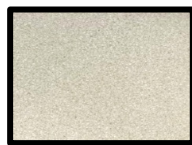
COLOR OPTIONS



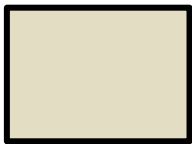
Organic
Signal White



Oriental Grey
Beige



Oriental
Oyster White



Quartz 1



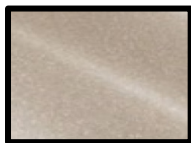
Quartz 2



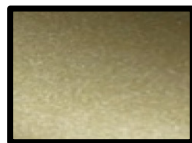
January 4



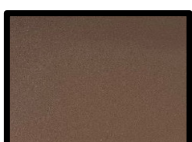
February 6



Roman
Bronze



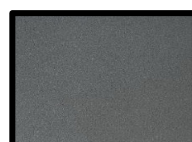
Roman Gold



Oriental Pale
Brown



February 5



Glacial Slate
Grey

CARPET OPTIONS



Black



Volcanic
Ash



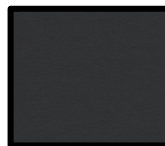
Clay



Barbados



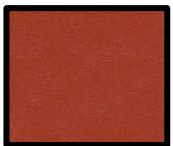
Grey Adobe



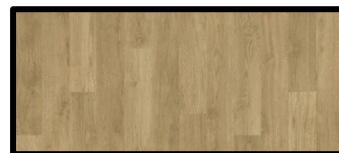
Cobalt Grey



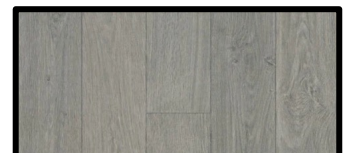
Terracotta



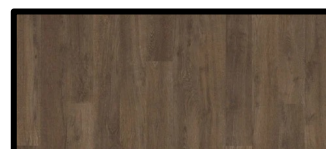
Berlin Red



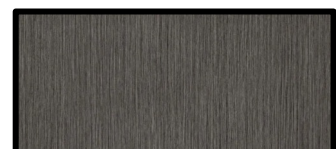
Natural Oak



Grey Oak



Dark Oak



Black Seagrass

OUR KEY DIFFERENCE

FACTORY-DIRECT TECHNICAL



THE FACTORY-DIRECT AFTER-SALES PROMISE

Cibes Lift Philippines Inc. knows that the secret to its phenomenal success has been its best-in-class after-sales service. Over 35% of our business comes from referrals. This is because Cibes has focused on a factory-direct strategy for its technical team as well:

- NO OUTSOURCING!
- TECHNICIANS TRAINED FROM SWEDEN
- LOCAL SPARE PARTS WAREHOUSE

OUR AFTERSALES IN THE PHILIPPINES

AFTER
SALES
TEAM



Mylen



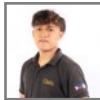
Teresa



Benigno



Warly



Jeric

POST
SALES
TEAM



Rosalie



Renalyn



Dessa



Chito

TECH
TEAM



Dave



Jose



Arlan



Eric



Elmer



Jeff



Recto



Roldan



Frank



Lexcil



Melkim



Jhon Paul



Jay



Dennis



Angelo



NATIONWIDE
COVERAGE

SHOWROOMS & TECHNICAL STATIONS



MAKATI



MANDALUYONG



QUEZON CITY



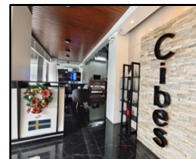
CEBU



DAVAO



ILOILO



CDO

CIBES PRODUCTION UNITS

DIRECT CONTROLLED



"It doesn't matter whether a Cibes is made in Sweden, the USA or China – all follow our extremely strict Swedish guidelines and conform to the toughest safety standards!"

Chief Operating Officer
Samson Popowitz

In charge of all Cibes Production Units

OUR PRODUCTION UNITS



GÄVLE, SWEDEN

Historical factory,
specializes in Accessibility
and Cibes Air
Size: 10,000 sqm

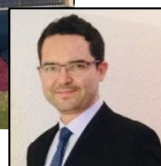


Daniel Eriksson
Head of
Gävle PU



JIAXING, CHINA

Opened in 2020, largest
R&D center and specializes
in high-end home lifts
Size: 24,000 sqm



Juan Trespalcios
Head of
Jiaxing PU

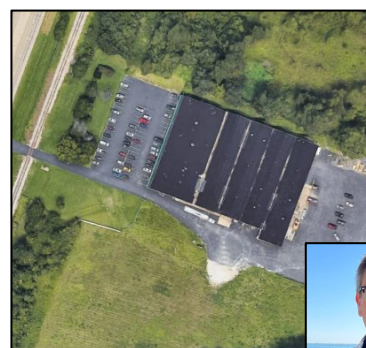


GDANSK, POLAND

Established in 2022 to
support our Swedish PU
and as EU training center
Size: 4,500 sqm



Johan Wangberg
Head of
Gdansk PU



PEORIA, USA

Created in 2008, specializes
in ASME-certified lifts for the
North American market
Size: 23,000 sqm



Mark Stadel
Head of
Peoria PU

ISO 9001
ISO 14001

 **liftinstituut**
SINCE 1933



FREQUENTLY ASKED QUESTIONS

How long does it take to install a Cibes Lift?

Installation time usually takes 7 - 14 days, depending on number of stops, size of the lift and location (indoor / outdoor)



Do I need to dig a pit or build a machine room?

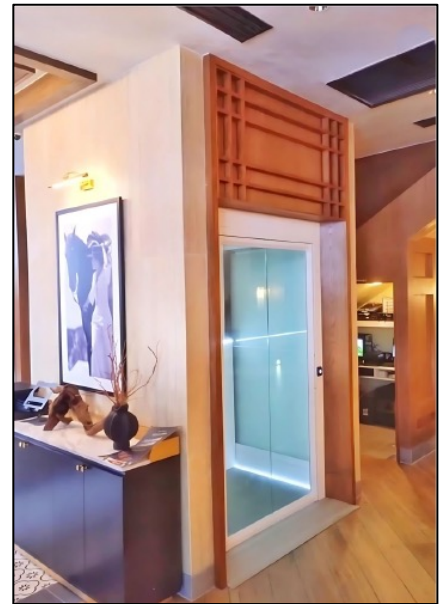
Cibes Air 2 are machine-room-less (MRL) and require no deep pit: only 50 mm pit depth is needed for a flush-floor finish.

If digging is not possible, it can be installed directly on the floor with a low aluminum ramp (50 mm).

How heavy is the lift and will my floor support it?

A typical Cibes 2-stop lift weighs around 1000 kg, including the shaft. Load is evenly distributed along the base frame; standard residential slabs (200 mm reinforced concrete) are usually sufficient.

For wooden or lightweight structures, Cibes engineers will provide load-spread solutions or base frames.



What if I didn't plan any space for a lift during house construction?

Thanks to its no pit, no machine room and existing shaft, the Cibes Air 2 is plug and play and can easily be retrofitted in existing homes.



How many floors can a Cibes Lift serve?

Up to 6 stops (5-6 floors) or 20 m travel height. It can be configured for straight vertical runs or split-level floors (e.g., mezzanine).

What power supply does it need?

A standard single-phase 230 V household outlet (16 A circuit) is sufficient in most cases. Three phase may be required for high travel or bigger sizes. Power consumption is similar to a washing machine (approx. 3 kW while running, near-zero in standby).

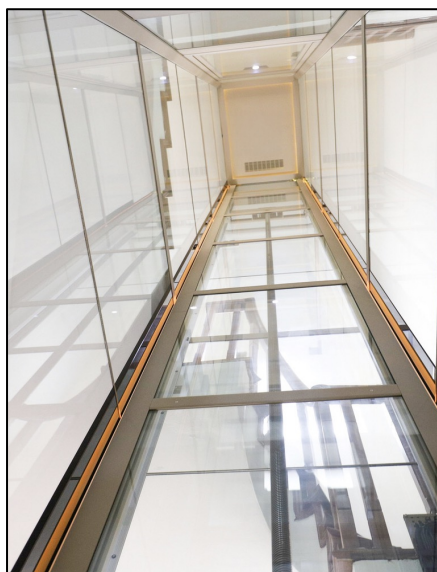


INSTALLATION GUIDELINES

FREQUENTLY ASKED QUESTIONS

What is the noise level?

Extremely low thanks to its Permanent Magnet Synchronous Motor: around 40 dB, similar to a quiet refrigerator. The screw drive produces smooth movement without hydraulic pumps or traction motors.



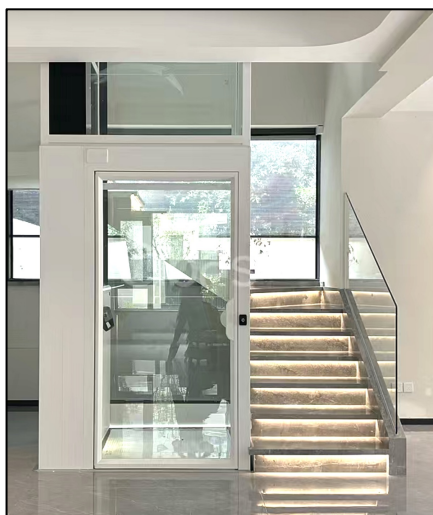
Can it be installed outside the house?

Yes, it's one of our specialties! Cibes offers outdoor and semi-outdoor (doors facing inside) installation options with weather-resistant shafts and covers. Our system can handle typhoons, sandstorms, high heat and even comes with a flooding sensor in case of emergencies!



Does it need a backup power system?

The Cibes Air 2 already comes with a backup battery system in case of brownouts. If the power cuts, it will shift to battery mode and automatically lower the lift to the nearest floor, then let the occupants safely exit.



How much maintenance is needed?

Only 1–3 maintenance visits per year, depending on usage and location of the lift (e.g. outdoors will be at the higher end of the range). The screw-drive system has few moving parts, so there's no oil leakage or wire rope wear, leading to much lower spare part replacement costs.



Can the lift be moved if I renovate later?

Yes, although you may need to reorder some parts, especially if it is for a higher travel. Thanks to its modular construction, a Cibes Air 2 can be dismantled and reinstalled in another location or home, making it flexible for future renovation or resale.

What ceiling height is required?

For the top floor, a minimum of 2350 mm clear headroom above finished floor level is required. If lower, the Cibes Air 2 also comes with a gate solution that only requires 1300 mm of height.

What are the structural requirements for installation?

Minimal. The lift's shaft carries its own load. You only need: a flat, solid surface (reinforced concrete or steel beam support). Fixing points every 3–4 meters, which can be achieved through additional brackets if needed.

Cibes

SHOWROOMS & TECHNICAL STATIONS



MAKATI CITY SHOWROOM

Patio, 2257 Chino Roces
Ave. Extension, Brgy.
Magallanes, Makati City,
Metro Manila



MANDALUYONG CITY SHOWROOM/OFFICE

Unit 502, G Business Hub,
728 Shaw Boulevard, Wack
Wack, Mandaluyong City,
Metro Manila



BALINTAWAK, QC. SHOWROOM

G/F Mezzanine MC
Premiere Bldg.,
1181 EDSA, Balintawak,
Quezon City, Metro Manila



CEBU CITY SHOWROOM

G/ F Grandcenia Hotel &
Residences Archbishop
Reyes Avenue Camputhaw
Cebu City



DAVAO CITY SHOWROOM

Unit 19, Zone E, Market
Basket Damosa IT Park,
Lanang, Davao City



ILO-ILO CITY TECHNICAL STATION

3rd Floor, Viosils Arcade,
Brgy. Taal, MH Del Pilar
Molo, Ilo-Ilo City



CAGAYAN DE ORO CITY SHOWROOM

COMING SOON!

CIBES LIFT PHILIPPINES INC.

0917 555 7054 / 027 529 1128
PH@CIBESLIFT.COM